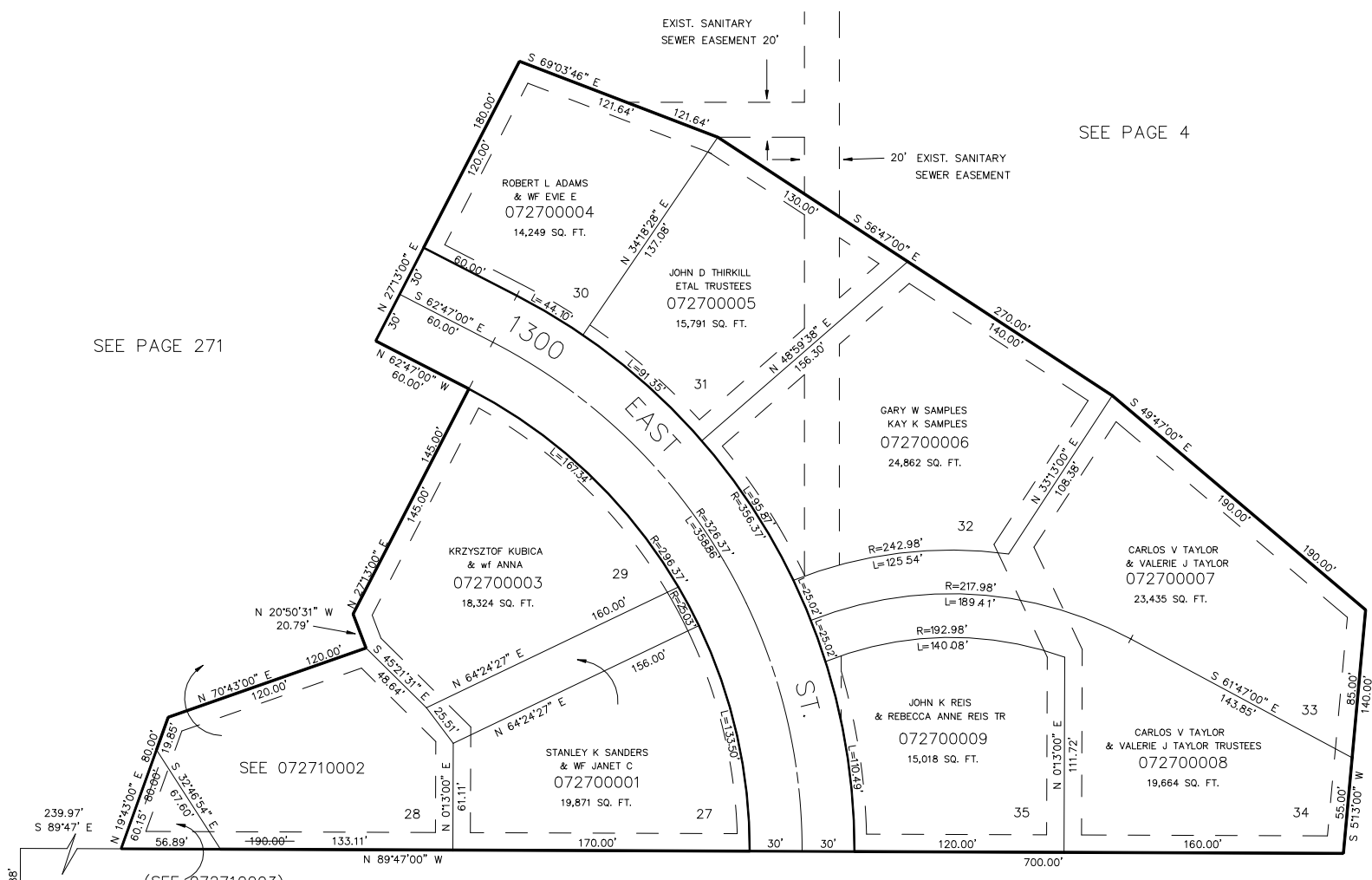


PART OF SW 1/4, SEC. 15, T.5N., R.1W., S.L.B. & M.
OAK CREEK ESTATES PHASE 3
 IN SOUTH OGDEN CITY
 SCALE 1" = 50'

TAXING UNIT: 27

SEE PAGE 271

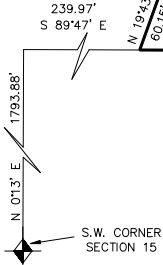
SEE PAGE 4



(SEE 072710003)

SEE PAGE 237

SEE PAGE 225



10' UTILITY EASEMENTS EACH SIDE OF PROPERTY LINE AS INDICATED BY DASHED LINES. ALL EASEMENTS TO BE USED FOR IRRIG. WATERLINES, DRAINAGE, SANITARY AND STORM SEWERS, POWERLINES, TELEPHONE LINES AND OTHER PUBLIC UTILITIES. FRONT PROPERTY LINE UTILITY EASEMENTS ARE 7' WIDE. ALL OTHERS ARE AS SHOWN.

FOR COMPLETE ENG DATA SEE ORIGINAL DEDICATION PLAT IN BOOK 23, PAGE 87 OF RECORDS.